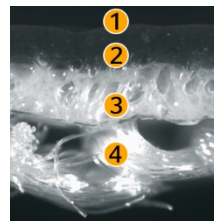




Acella® Hylite Concept

Translucent Surface Material



- ① Lacquer Finish
- ② Compact Layer
- ③ Foam Layer
- ④ Textile Backing

Product Benefits

- › Translucent when illuminated from the back
- › Light effects, illuminated logos, buttons or enlightened applications can be integrated behind the surface
- › Solution for ambient lighting
- › Unilluminated appearance: non-transparent with grain according to customers' requirements and in various colors
- › Good performance in heat aging and light fastness

Material Construction

Construction	Surface Material
Thickness	0.8 - 1.4 mm
Applications	Instrument Panel, Door/Side Panel, Center Console
Backing	Textile
Processing Method	Cut & Sew



The content of this publication is not legally binding and is provided as information only. The trademarks displayed in this publication are the property of Continental AG and/or its affiliates. Copyright © 2018 ContiTech AG. All rights reserved. Registered trademark ® in Europe. For complete information go to: www.contitech.de/disc1_en

Division ContiTech of Continental AG

Benecke-Hornschuch
Surface Group