

THE WORLD'S BEST TRACTOR NOW RIDES ON THE WORLD'S MOST ADVANCED TRACK.



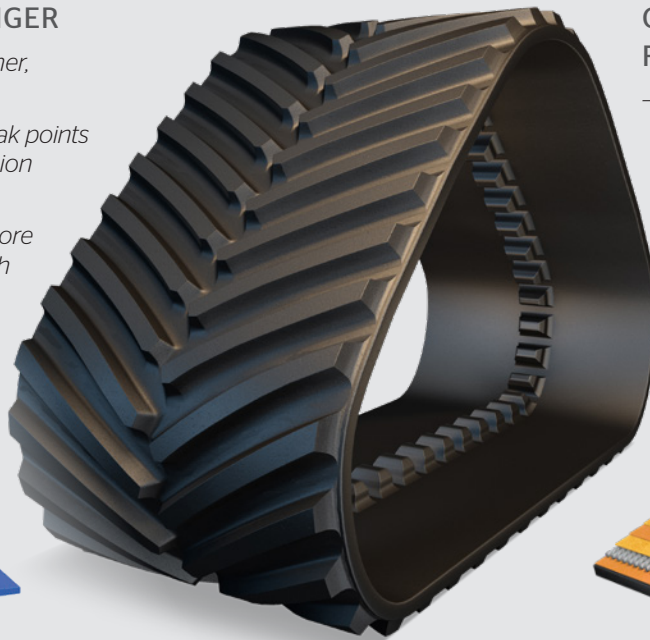
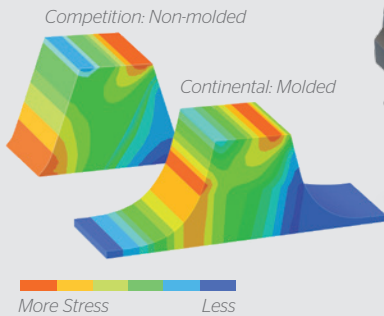
The NEW Trackman XP line of tracks comes standard on the 2019 Quadtrac. Our partnership with Case runs deep because together we bring new innovations and set new standards. And we'll continue to deliver groundbreaking innovations in every track we make.

DESIGNED TO BE STRONGER, LAST LONGER AND RIDE SMOOTHER

FULLY-MOLDED IS STRONGER

- Fully-molded track equals tougher, longer-lasting track
- Non fully-molded has built-in weak points that can lead to early deterioration and failure

On top of longer life, you get a more consistent rubber thickness which leads to greater stability and a smoother ride.

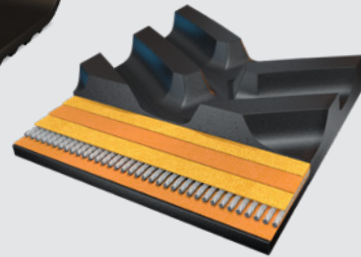


CONSTRUCTED FOR LONGER LIFE

- Wire-ply construction with 50% more wires per inch than our competition

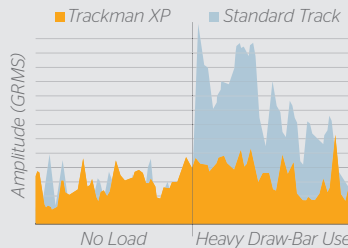
- Patented galvanized steel cables prevent corrosion and premature weakness

All this adds up to a track that will last season after season, even under the heaviest load.



UP TO 70% REDUCTION IN VIBRATION

- Our exclusive Anti-Vibration Technology™ and advanced tread design on our XP track greatly reduces vibration by as much as 50% to 70% vs. standard track

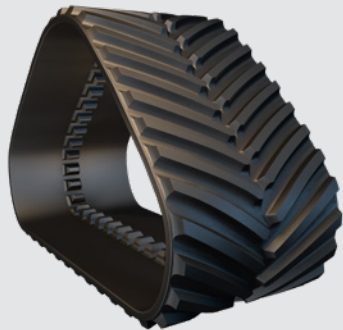


- Compound and construction improves drive lug engagement, reduces drive lug distress and extends track life

Our tread design also maximizes traction and dirt cleanout for improved performance.

Trackman

OUTWORKS. OUTLASTS. OUTPERFORMS. OUT HERE.



Trackman | XP

STANDARD ON QUADTRAC'S LESS THAN 580HP

Continental Trackman XP has been designed to handle more horsepower and deliver better traction to pull more weight.

Our XP track delivers:

- Improved track life that outlasts other tracks
- Reduced vibration for improved ride and operator comfort
- New wheel path compound is formulated to minimize abrasion and punctures



Trackman | XP

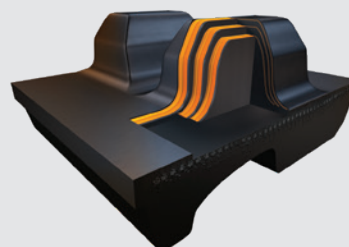
+ ARMORLUG®

STANDARD ON QUADTRAC'S 580HP AND GREATER

It has been thoroughly field-tested to deliver proven performance in the toughest conditions and outperform any other track of its kind.

Includes all XP track features, plus:

- Exclusive ARMORLUG® technology extends the life of the track up to 23% more over the standard track
- Reinforcement fabric covers the entire drive lug and extends into the wheel path for added drive lug protection
- 4-year best-in-class limited manufacturer warranty



Trackman | XP

+ ARMORLUG® ULTRA

HAULS THE HEAVIEST LOADS AT MAX HORSEPOWER AND TORQUE

Designed to take on more, thanks to its patented drive lug with three fabric layers embedded in the lugs for unmatched durability.

Includes all XP track features, plus:

- First patented drive lug with three fabric layers embedded in the lugs
- Offers up to a 25% increase in torque capability
- Lasts as much as 30% longer than other positive-drive track
- 5-year best-in-class limited manufacturer warranty

Case Part #	Track	Continental Part #	Width (inches)	MAXXTUFF™ Layers
51457436	Trackman XP	616850	30	3
51457437	Trackman XP	616860	36	3
47826945	Trackman XP with ARMORLUG	615270	30	4
47829014	Trackman XP with ARMORLUG	615280	36	4
47829015	Trackman XP with ARMORLUG SC	615640	30	4
84379424	Trackman XP with ARMORLUG Ultra	616260	30	4
84379425	Trackman XP with ARMORLUG Ultra	612570	36	4
84379427	Trackman XP with ARMORLUG Ultra SC	611980	30	4

Continental
703 S. Cleveland Massillon Road
Fairlawn, OH 44333-3023 U.S.A.
1-877-394-0482
continental-trackman.com

The trademarks displayed in this publication are the property of Continental AG and/or its affiliates. Copyright © 2018 ContiTech AG. All rights reserved.

